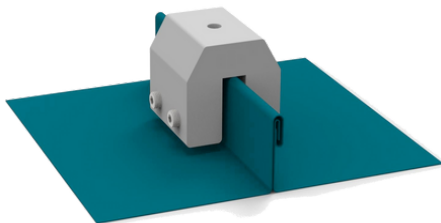


Item Code: OPVS-SSC-21
Description: STANDING SEAM CLAMP



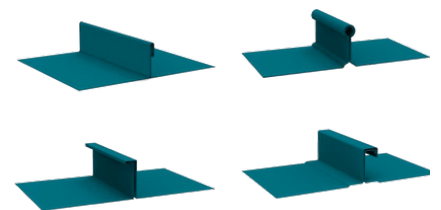
Roof Friendly

Install on the roof-seam directly ,
non penetrative



Easy Installation

Fasten clamp on roof seam with
blind rivets in two side



Universal

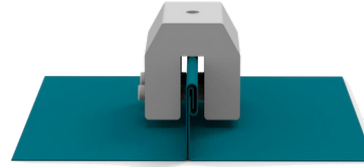
Suitable for single or double-
folded seams $\leq 14\text{mm}$



Quick Installation Guide



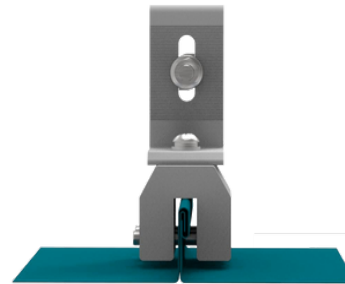
Step 1:
 Confirm the single or double roof seam width.
PS: Seam width $\leq 14\text{mm}$



Step 2:
 Confirm the Clamp position and attach the Clamp on roof seam.



Step 3:
 Fasten clamp on side with 4 blind rivets.
 Torque value:
 12 N.m



Step 4:
 Install L feet on clamp and then connect rail system.
 Torque value: 12 N.m

Technical Data

Max pull out load vertical to roof:	7.8KN
Screw tension:	up to 4NM
Ultimate Tensile Strength:	62
Tensile Yield Strength:	42
Fatigue Strength:	100 Mpa
Shear Modulus:	26.0 Gpa
Shear Strength:	205 Mpa
Hardness, Knoop:	21
Hardness, Vickers:	701
Elongation at Break:	0.80%
Modulus of Elasticity:	69.0 Ga

